

Connecting Families – Edge of Care



Context

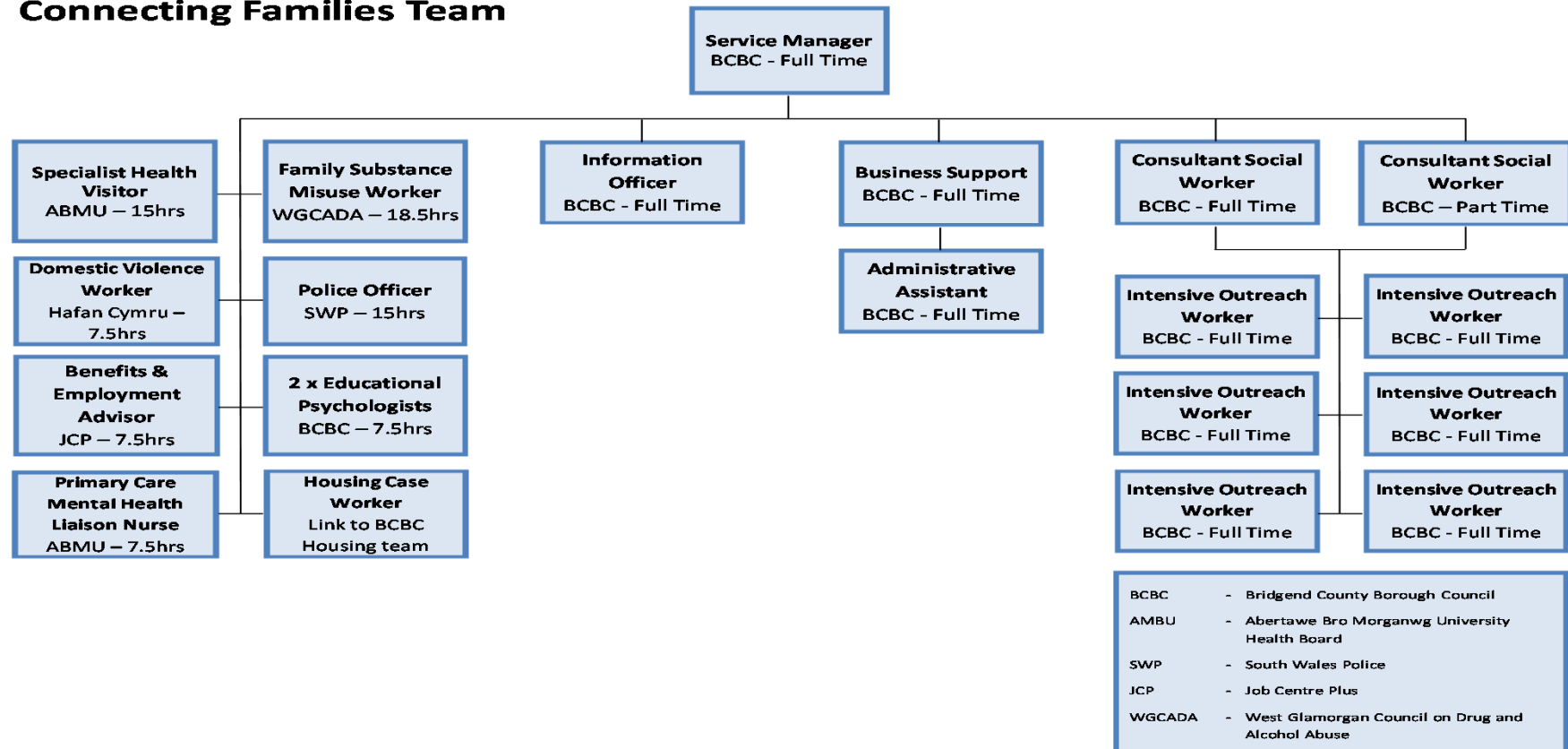
- * Between 2007/8 and 2011/12, the Bridgend LAC population increased by 40% compared to a 24% increase across Wales
- * Children under 2 and young people aged 14 to 16 accounted for almost 50% of BCBC's LAC population between 2008 and 2013.
- * The LAC population in Bridgend was continuing to rise at a steady rate and support for families needed to change

Connecting Families – Background

- * Local Service Board (LSB) sponsored development in 2011
- * Anecdotal evidence of poor outcomes and high cost for a relatively small proportion of families across Bridgend
- * Research and evidence to support Connecting Families model drawn from a variety of sources including Westminster's Family Recovery Programme
- * Recognition that interventions must be intense, co-ordinated and multi-agency

Connecting Families – Staff Team in 2011

Connecting Families Team



Connecting Families – Approach/Impact

- * Complex families affected by Substance Misuse, Domestic Abuse and/or Mental Health Issues.
- * Multi Agency Approach
- * Support lasted for as long as was needed. Fairly Intense Support.
- * Evidence from service highlighted costs avoided to Local Authority.
- * Referral led service
- * Question mark as to whether the right families or families in need of support were being worked with

Edge of Care (EoC) Proposal

- * High number of children coming into the care system – focus of an LSB workshop in January 2014
- * Agreement subsequently to focus some Connecting Families resources on targeting those children on the ‘edge of care’ to avoid LAC status
- * Annual target set of working with 20 children (and their families) aged 11-16 years at high risk of entering the care system
- * Initial age focus informed by high numbers of teenagers entering the care system



Approach

- * Targeted support offered based on research of our current LAC data
- * High risk of young person becoming Looked After
- * Children aged 11-16
- * Currently or previously on CP register
- * Previously LAC
- * Affected by DV, MH, SM
- * School exclusions
- * Known to Probation Services
- * Housing Issues



The Intervention

- * Whole Family approach - 2 Workers to 1 family
- * Parent Worker and Child Worker
- * Parallel Working
- * 12 week intervention - follow up support available for up to 1 year
- * Evidenced Based Interventions including Solution Focussed Approach, Family Therapy and Non Violent Resistant Parenting



EoC - Progress

- * Went live on 1st May 2014
- * 30 Families accessed Edge of Care Service during 2014 – 15
- * 52 children (including siblings) – significantly exceeding target
- * Now utilising support via Early Help Hubs



EoC – Public Services Outcomes

- * Prior to intervention each family on average had cost Public Services approximately £40k per annum
- * Following intervention the average costs avoided for public services is reduced to a projected £23k per annum
- * Total costs avoided to Public Sector = approximately £707k once the service costs of Connecting Families are deducted (135K)



EoC Cost Avoidance

Agency	Cost Avoidance	How was This Achieved:
Local Authority	£352k	£289k = 52 children prevented becoming LAC for a period of time. Remaining £63k = reduction in legal status, deregistration CPR & case closure.
Criminal Justice	£11k	Less imprisonments and attendances at Magistrates court.
Education	£237k	17 fewer School exclusions & 10 children / YP improved their school attendance .
Health	£6k	Fewer attendances at A & E for example.
Housing	£36k	3 fewer neighbour disputes, 2 fewer evictions & 2 tenancies have been secured
Police	£163k	15 fewer arrests, 2 YP have stopped engaging in ASB, 17 fewer ASB warning letters issued, 16 fewer domestic abuse incidents, 68 fewer police callouts & 30 fewer missing person reports
YOS	£37k	Less intensive supervision & surveillance orders

Outcomes for Local Authority

- * 3 children have been completely closed to Children Services
- * 13 children have been deregistered from the CPR
- * 38 of the 52 children still remain out of the care system
- * LAC numbers in Bridgend reduced to 388 on 26th June 2015 from 410 in April 2014



Feedback From Families

“They have been a good go between, between me and my son. It is early days and we are waiting for other agencies such as the drugs counsellor. My son has a doctor’s appointment tomorrow about his ADHD. I think that Connecting Families is a good service, helping with benefits and stuff. They get help from the other agencies. It is difficult enough bringing teenagers up without managing one with ADHD who kicks off. They have supported me, getting the help we need”

Feedback From Families

- * “It gave us a better insight into parenting. We learnt about teenager problems and behaviour. We had a lot of advice on behaviour in general”
- * “Could see a difference in my daughters behaviour”
- * “Daughter not hanging around with the same people anymore”
- * “I have listened to mum more”

Case Study 1

- * Family Known to Children Services for approximately 10 years.
- * Parental Mental Health Issues, Domestic Abuse, Bereavement issues, Housing disputes, Previous conviction for school attendance issues
- * Young Person = Poor school attendance, at risk of Sexual Exploitation, Socially Isolated, Reported Missing



Case Study 1

Outcomes

- * Improved school attendance from 19.8% to 75.8%
- * Reduction in Police callouts
- * No housing disputes
- * Mother re-engaged with Mental Health support and taking medication regularly
- * Sibling case closed to Children Services.



Case Study 1

Cost Avoidance

Agency	Issues (1 year prior to intervention - 08/05/13 - 07/05/14)	Cost (1 year prior)	Issues (during the intervention period - 08/05/14 - 28/07/14)	Cost (during intervention)	Issues (during the review period - 29/07/14 - 31/03/15)	Cost (during review)	Cost aversion	Total
Criminal Justice	1 attendance at magistrates court (£1,377.00 per attendance)	£1,377.00	0 attendances at magistrates court	£0.00	0 attendances at magistrates court	£0.00	£1,377.00	£1,377.00
Education	2 young people had poor school attendance (£3,753.00 per year, per child)	£7,506.00	0 young people had poor school attendance	£0.00	1 young person had poor school attendance (£3,753.00 per year)	£3,753.00	£3,753.00	£3,753.00
Health	1 young person was supported by CAMHS (£4,788.00 per year)	£4,788.00	0 young people were supported by CAMHS	£0.00	0 young people were supported by CAMHS	£0.00	£4,788.00	£4,788.00
Housing	1 insecure tenancy (£9,320.00)	£9,320.00	0 insecure tenancies	£0.00	0 insecure tenancies	£0.00	£9,320.00	£10,414.00
	1 neighbour dispute (£1,094.00 per dispute)	£1,094.00	0 neighbour disputes	£0.00	0 neighbour disputes	£0.00	£1,094.00	
Local Authority	2 young people were classed as CIN (£11,117.84 per year, per child)	£22,235.68	1 young person was classed as CIN (£11,117.84 per year)	£11,117.84	1 young person was classed as CIN (£11,117.84 per year)	£11,117.84	£11,117.84	£11,117.84
Police	1 domestic abuse incident (£562.00 per incident)	£562.00	1 domestic abuse incident (£562.00 per incident)	£562.00	1 domestic abuse incident (£562.00 per incident)	£562.00	-£562.00	£2,598.00
	2 missing person reports (£2,500.00 per report)	£5,000.00	0 missing person reports	£0.00	1 missing person report (£2,500.00 per report)	£2,500.00	£2,500.00	
	5 police callouts (£132.00 per callout)	£660.00	0 police callouts	£0.00	0 police callouts	£0.00	£660.00	
Total	NA	£52,542.68	NA	£11,679.84	NA	£17,932.84	£34,047.84	£34,047.84



Case Study 1

Costs Avoided

Agency (benefiting from the cost aversion)	Positive outcomes	Cost Averted	Total
Local Authority	1 young person has been prevented from becoming looked after with in-house foster carers for a period of 47 weeks.	£13,083.39	£13,083.39
Total			£13,083.39



Developments & Next Steps

- * Amalgamated our Family Support Team into Connecting Families
- * All 8 Family Support Workers\Intervention specialists now completing work around children at risk of entering care system, those in care (including rehab home) and general family support work
- * Group work developed including Parenting, Sexual Exploitation Prevention, Attachment and Dads Group
- * Improve Targeting – focus on intervening earlier and take learning from past 12 months forward

Thank You

Any Questions?